

Hinkley Point B Power Station

Monthly Newsletter



August 2019 monthly report

Introduction

This is our latest monthly report, sharing news with our local community stakeholder groups and local councils. This forms part of our commitment to being an open and transparent business. These reports are also available to all members of the public at www.edfenergy.com. This newsletter covers **July 2019**.

Safety and Environment update

We measure our safety performance against top tier indicators. It is now over twelve years since we experienced a nuclear reportable event, over ten years since our last environmental event, over three years since the last lost time incident to an EDF Energy member of staff, and over two years since the last lost time incident to a contract partner. These high levels of safety performance are comparable to some of the best performing nuclear power plants in the world, and we will ensure we maintain this focus and these high standards as we strive towards operational excellence.

On 25 July Hinkley Point B held its annual Level 1 emergency exercise which was observed by the Office for Nuclear Regulation (ONR). The exercise was deemed an adequate demonstration of the site's emergency arrangements and compliance to site licence condition 11.

Station generation

Reactor 3 / turbine 7 has been on-line since 16 June 2019, and operated at full load throughout the month.

Reactor 4 / turbine 8 has been on-line since 21 February 2019, and operated at nominal full load throughout the month.

Community news

Hinkley Point Family Day

Hinkley Point A, B and C sites joined forces to organise a family day for workers and their families on Sunday 21 July. The successful event attracted over 1,000 people, and activities on the day included: guided tours of all three sites, stalls, games, face painting, a raffle, a pig roast and many other activities. At the event, over £1,700 was raised for EDF Energy's charity partner, Breast Cancer Now.



EDF Energy Nuclear Generation Limited
Hinkley Point B Power Station
Near Bridgwater, Somerset, TA5 1UD

T: +44 (0)1278 654600
F: +44 (0)1278 654610
www.edfenergy.com

Registered office: Barnett Way, Barnwood
Gloucester, GL4 3RS. Registered in England
and Wales number 3076445.

UK Tesla Owners Club visit Hinkley Point B

Innovation and sustainability were the two main topics for discussion after a cavalcade of 20 Tesla cars descended upon Hinkley Point B at the end of July. The visit was organised by the station's visitor centre team, and Paul Tucker who works for EDF Energy at Barnwood and who is a member of the UK Tesla Owners Club.

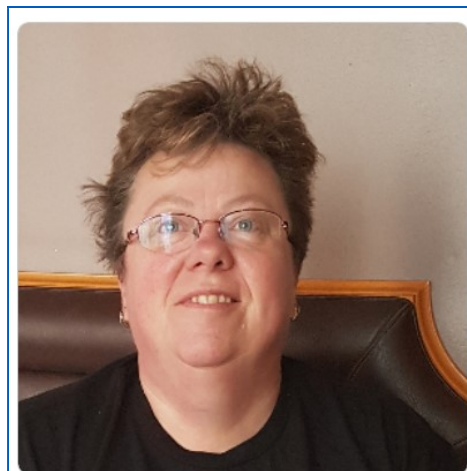
On the day they were hosted by the site's sustainability coordinator, Gabriel Carrillo-Ureta, and members of the station sustainability team. The group were given a comprehensive overview of the station's various sustainability initiatives, before embarking on a tour of the site. Their day culminated with a visit to the Hinkley Point C construction site.



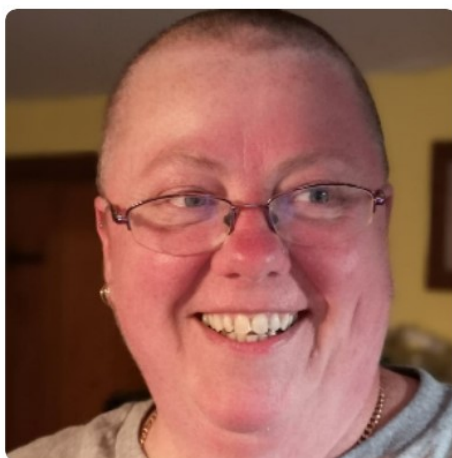
Staff fundraising

Two employees from Hinkley Point B were busy during the month doing their bit for charities.

Sharon Parker (see below) raised over £1,000 for charity after taking part in a brave the shave challenge where she shaved her head. Sharon, who works in security, raised the money for Macmillan Cancer Support.



Before



After

Sharon Parker



Wayne Reeder

Wayne Reeder was part of a team of four who raised over £8,000 for a cancer charity after taking part in a 24-hour mountain bike race. Wayne, who works in operations, raised the money for Hope for Tomorrow, and his team completed 32 laps of the 8-mile circuit at Newnham Park, Plymouth.

Next community meeting

The next Site Stakeholder Group meeting will be held on Friday 25 October 2019 from 10:00 hours to 13:00 hours at the Hill House, Otterhampton.

Contacts

Dave Stokes, Communications Officer, Hinkley Point B, Tel: 01278 654699, Email: dave.stokes@edf-energy.com, and Andrew Cockcroft, External Communications Manager, EDF Energy, Email: andrew.cockcroft@edf-energy.com