

Coronavirus Update

We continue to welcome back construction workers to site, in a responsible way ensuring we can achieve social distancing. Team members who are able to work from home are still being encouraged to do so.

New shift patterns have also been introduced to reduce the number of workers on site at any one time. For example, introducing new back shifts which work from late afternoon to early morning.

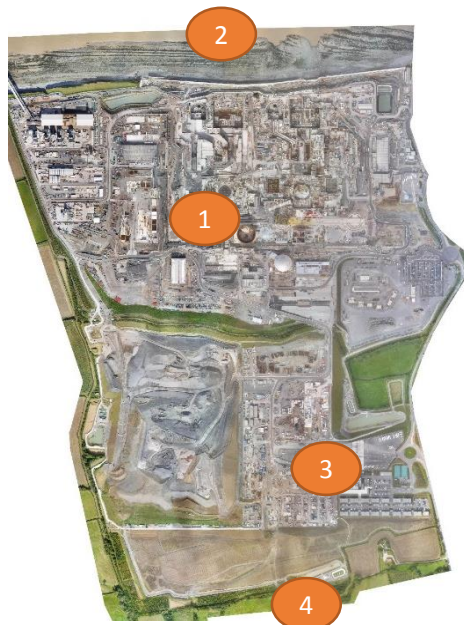
The process in place to manage team members return to work is thorough, with senior management signing off an individuals need to return before their site pass is re-activated.

Keeping students inspired

Start is a free and comprehensive digital platform, offering young people a single starting point for career guidance. Explore [our profile](#) to find out more about the project, our education programmes, different roles on the project and much more.

Site Map

Match the locations in the table on the right hand side to the map.



Hinkley Point C look ahead

August 2020

We carefully manage our works at Hinkley Point C, ensuring our construction activity has minimal impact on our neighbours. However, you may still see and hear some aspects of the work. This is a summary of some of our current works:



Location		Description of works
1	Unit 2 – Nuclear Island	In August, Big Carl will be used to lift the second cup liner. It will be lifted from Bunker 5 where it has been constructed to the reactor building on Unit 2.
2	Tunnelling	A Jack up Barge will be working offshore from late July collecting samples of the seabed in the areas into which the heads will be placed. In addition to the Jack up Barge, two support vessels will be used to transfer personnel, deliver supplies and transport the samples back to dry land. Operations will be 24hrs a day with crew and project staff living on the barge.
3	Training centre	One of our main contractors on site, Bylor, has now opened a dedicated training centre. It will be used to ensure workers have the correct training to undertake tasks, such as working at height, and also up-skill the workforce as part of our commitment to people development.
4	Southern Area	Following site set up, construction of the Emergency Access Road will begin. There will be a separate look ahead for the southern area of works. To be added to the distribution for the Southern Area look ahead, please get in touch using the details below.
	Site Operations	Our on site petrol station, known as the “fuel farm” is now operational. As one supplier will now be coordinating all the fuel deliveries, the number of tanker movements on the local road network will reduce.
Off Site	Combwich Wharf	Works will continue on the build of the temporary retaining wall, which will be used as support during the demolition works.

In other news

In 2019, EDF's 8 nuclear power stations generated enough low carbon electricity for 49% of UK homes. Avoiding 17.8m tonnes of CO2 emissions... Like taking 8.1m cars off UK roads for a year. Find out more [here](#).

Visit: www.edfenergy.com/hpc
E-mail us at: hinkley-enquiries@edf-energy.com
Call us on our 24/7 hotline: 0333 009 7070

The HPC Jobs Service is there to support people into jobs on the project. Visit www.edfenergy.com/hpcjobs to register for the latest opportunities.